

Madera

Back to Back pod

Timber pod

Experience the charm of genuine Ash timber, stained to dark black, or finished in it's beautiful natural color. This Modern and stylish Nordic look ticks all the boxes when trying to bring the out doors in. spruce up your office with something different and refreshing.

Custom Designs
Made in NZ to your design



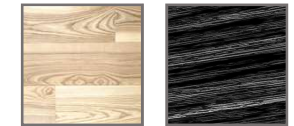
Also in this collection

- Coffee table
- Desking
- Back to back pods
- Boardroom tables
- Collab table

Ash frame

- Solid 120x40mm
- Levelling glides
- Steel bracing on top underside

Frame color options



Natural Ash

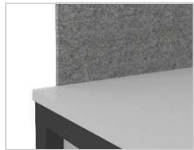
Black Ash

Worktops

- Commercial-grade 25mm worksurfaces finished in a wide range of melamine colors with matching PVC edge, using laser clashing technology.
- Optional shark-nose edge.
- Optional 32mm Solid Ash top.

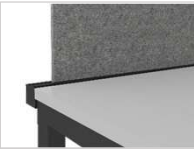
Solid Ash 32mm				
Quickship White(5days)				
Commercial colors plain	Storm	Br/Silver	Snowdrift	Ash White
256 Custom colors	<ul style="list-style-type: none"> - Melteca - Prime Panels - Melamine 			
Special finishes	<ul style="list-style-type: none"> - HPL, Veneer 			

Screen selection



E-Screen back mount

- Available in 12 E-panel colors
- Under-desk mount brackets
- 0.40 NRC Sound absorption



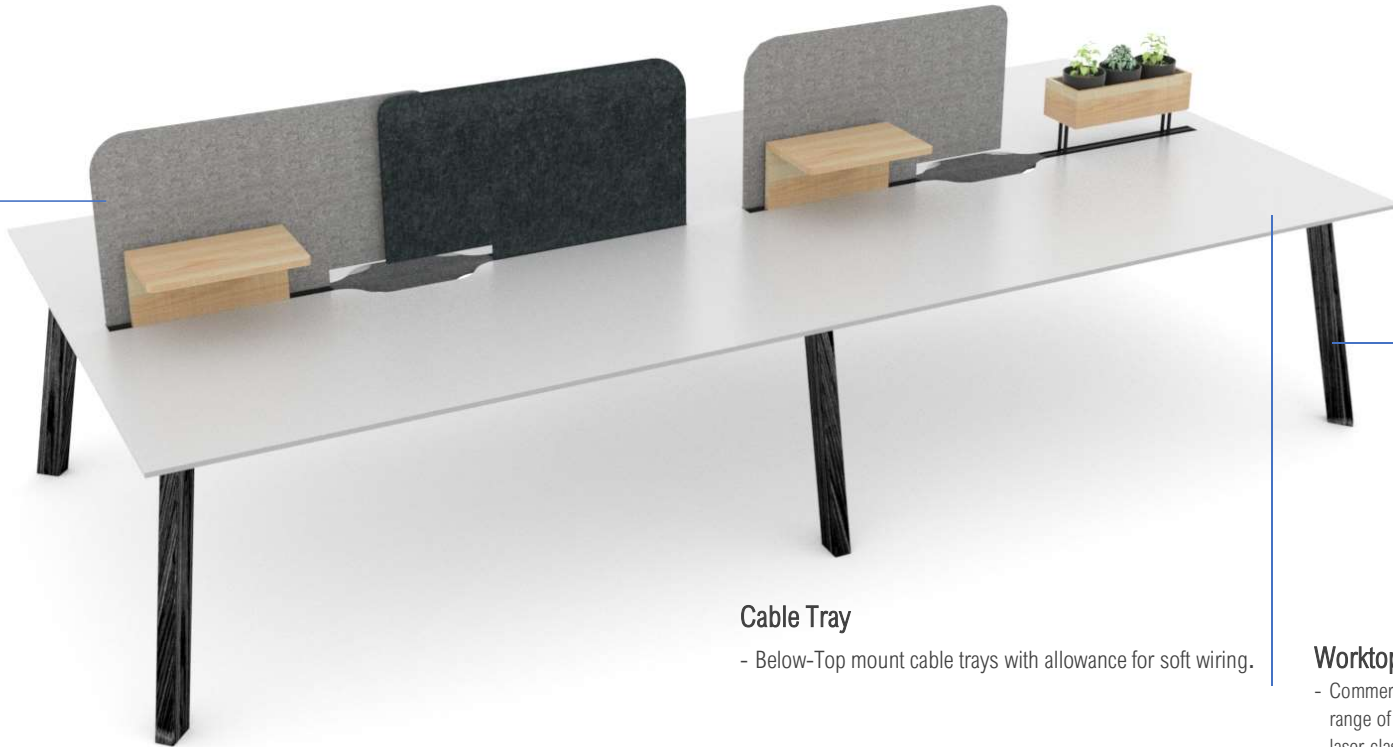
Docking rail

- Screen available in 12 colors
- Shelves and paperslots to fit docking rail



C30

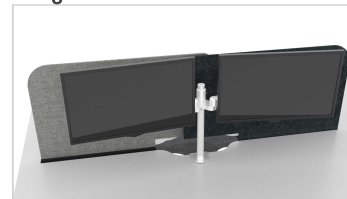
- Pinnable, upholstered screen.
- Powdercoated frame.



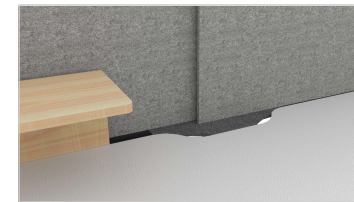
Cable Tray

- Below-Top mount cable trays with allowance for soft wiring.

Single or Double LCD arm



E-Panel cable access lid



Configurations

